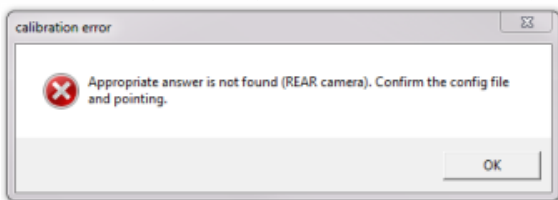


Backeye®360 Calibration Error

Related Products - BN360-000, BN360-200 & BN360-300

While calibrating the system using the **360 Select Calibration Tool** software if a **Calibration Error** prompt box (see below) is displayed, after clicking the **Apply AVM**, there is normally something wrong with the control points. (See numbered in fig. 2)



6.5.5 Surround View Preview
Clicking the "Apply AVM" button will open the surround view "Preview" window.

If there is anything wrong with the control points the "Calibration Error" prompt will be displayed with a list describing which camera is incorrect. This is generally due to two errors:

1. The control points are not correctly aligned. Check the order and position of the control points paying attention to the camera given in the message box.
2. The Calibration Mats are not correctly/accurately positioned around the vehicle. Re-align the calibration mats correctly.

Tip:

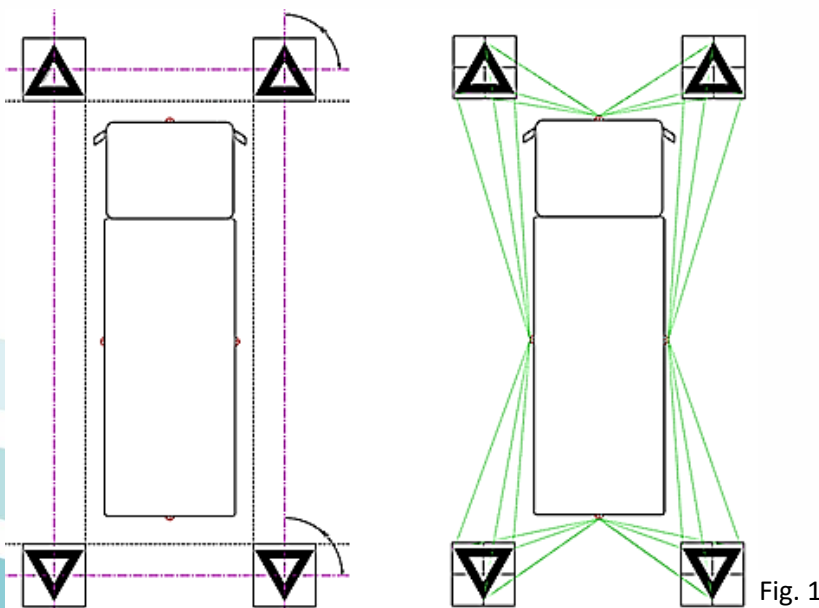
- Selecting "OK" in this window to bypass the prompt and the "Preview" window will open.
- Keep the "Preview" window open while making the adjustments to the control point.
- Re-select "Apply AVM" whilst adjusting view the effect of the changes to the surround view image "live".
- Adjust one control point at a time to get the most suitable surround view image.
- For certain calibrations it may be very difficult to select the control points without receiving the error message. It is possible to continue with the error message however it is advised to only skip this if the items listed above have been checked.

This Tip refers to Vehicle Calibration, section 6 of the User Manual, found in the USB tab on the website.

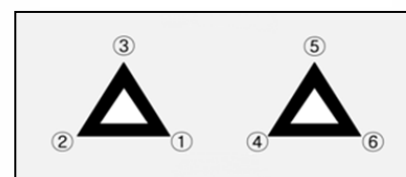
This is generally due to three errors.

- The control points are in the wrong order Check the order of the control points, paying attention to the camera given in the message box – **FRONT, REAR, LEFT or RIGHT**.
- The control points are not aligned accurately to the triangle points. Check the position of control points, paying attention to the camera given in the message box – **FRONT, REAR, LEFT or RIGHT**.
- The calibration mats are not correctly positioned around the vehicle. Re-align mats correctly. (See fig. 1)

In addition, ensure the control points are selected in the same order for all triangles. They should be in the same sequence as shown in fig. 2



Front and Rear Camera View



Left and Right Camera View



Fig. 2

Where to find this and other Tech Tips on the website

