

Ref: TT0021
V1.1

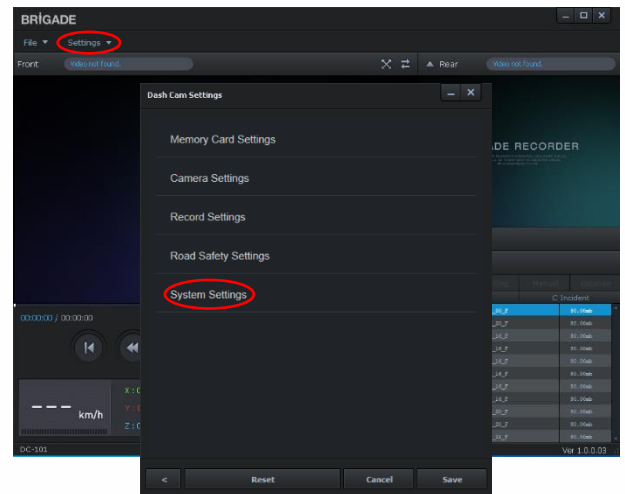
MDR - Dashcam Voice Guidance Volume Adjustment

Related Products - DC-101-00X and DC-102-00X

By default the Brigade Dash Cams Voice Guidance volume is enabled. If the user wishes to disable this function, it can be done by following the steps below.

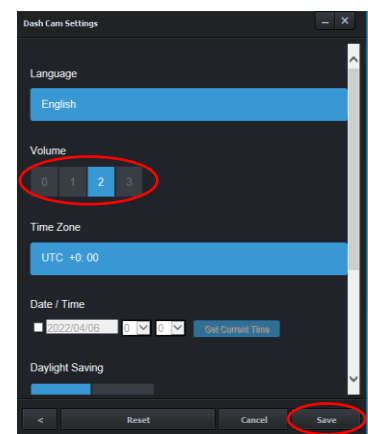
The Dash Cam settings can be changed by removing the Micro-SD Card from the unit. **Ensure the Dash Cam has been turned off before attempting to remove the Micro-SD Card.**

Insert the Micro-SD Card into the adapter provided and then into the PC. If not already done so, install the Brigade Dashcam Viewer and open. In the top left, of the Viewer, there is a **Settings** button, click this to dropdown the menu. Click into **Dash Cam Settings**, then **System Settings**.



Second from the top, within **System Settings**, is **Volume**, which is set to **2** by default. To turn off the Voice Guidance click on **0** and then **Save** (bottom right).

'Electronically' eject the SD Card before physically removing from the PC. Remove the Micro-SD from the adapter and insert back into the Dash Cam, **while it is still powered down**. When the Dash Cam is turned back on the Voice Guidance will be turned off.



Note: The X can be replaced by any number between 0 – 3 and denotes the region.

000 = UK, 001 = USA, 002 = EU & 003 = Canada

Where to find this and other Tech Tips on the website

