

Ref: TT0030  
V1.1

## MDR - Recording Backeye®360 to MDR-641

**Related Products - MDR-641 and BN360-300 (5800A) or BN360-200 (5200)**

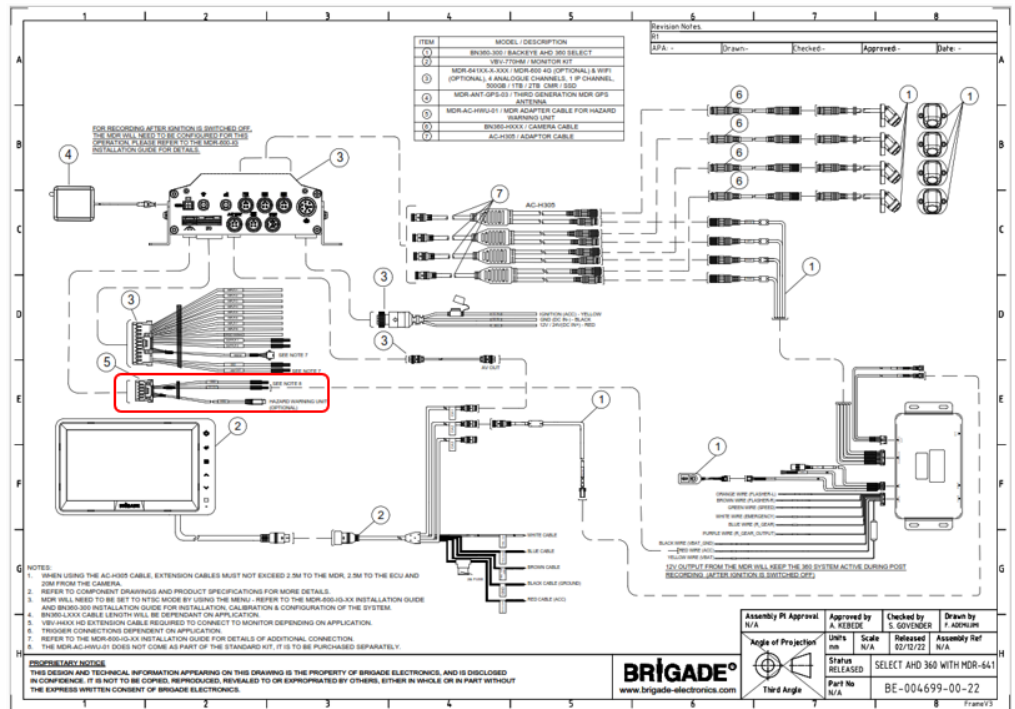
When connecting the MDR-641 to a recordable Backeye®360, ancillary adapter cable MDR-AC-HWU-01 (7054) is required to provide a regulated voltage supply to the BN360-300 (5800A) or BN360-200 (5200).



MDR-AC-HWU-01 (7054)

Below is a copy of the generic wiring diagram showing the location of the MDR-AC-HWU-01, connecting the MDR-641 to the BN360-300 (5800A). Clicking [here](#), will link to the actual drawing on the website.

Click [here](#), for the link to the drawing of the MDR-AC-HWU-01 connecting the MDR-641 to the BN360-200 (5200) on the website.



MDR-641 connected to BN360-300 (5800A), using adapter MDR-AC-HWU-01

**Note:** Only the BN360-300 (5800A) can be connected to the MDR-641, via the MDR-AC-HWU-01 adapter cable. The BN360-300 (5800) is non-recordable and therefore cannot be connected to the MDR-641.

Where to find this and other Tech Tips on the website

