



Brigade

How to setup a mirror image on the MDR-600 series

Version 1.0 – Oluwatayo. B

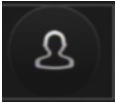
Overview

This guide is designed to explain:

- How to access the MDR setup.
- How to change a normal image to a mirror view on the MDR-600 series.
- How to save the modified changes.



How to Login to the MDR Setup menu **Brigade**


- To login to your MDR you will need to insert your USB wired mouse in the USB port in the front of the MDR.
- Using your mouse, right click anywhere on the monitor's display and a menu bar will appear along the bottom of the screen.
- Click on the icon of a person  in the bottom right of the screen to open the login page.



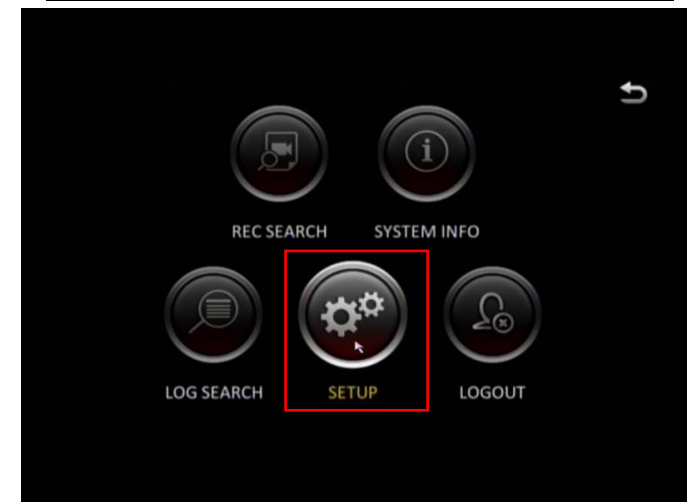
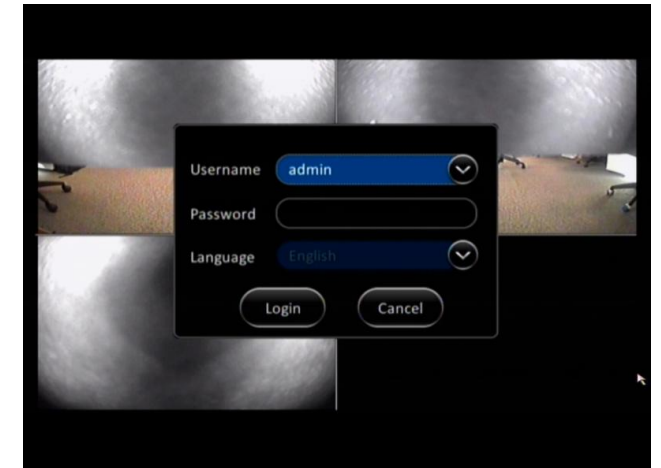
How to Login to the MDR Setup menu

- Login as administrator mode
- Enter your password
- Select your preferred language

Note: if you have forgotten your password, contact Technical Support

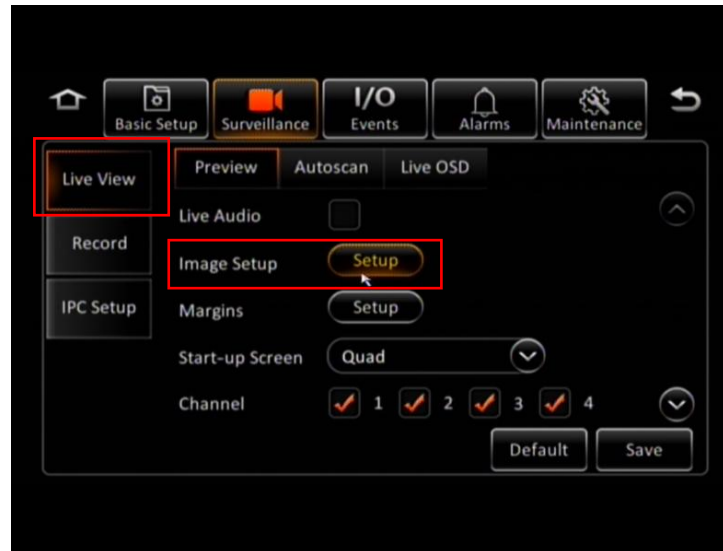
- Click on  to open setup.

Brigade



How to change normal view to mirror view

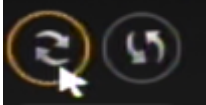
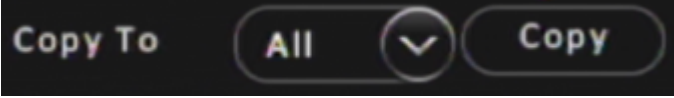
- Click on Surveillance
- Click on Live view on the left-hand side
- Click on preview
- Click on Image setup

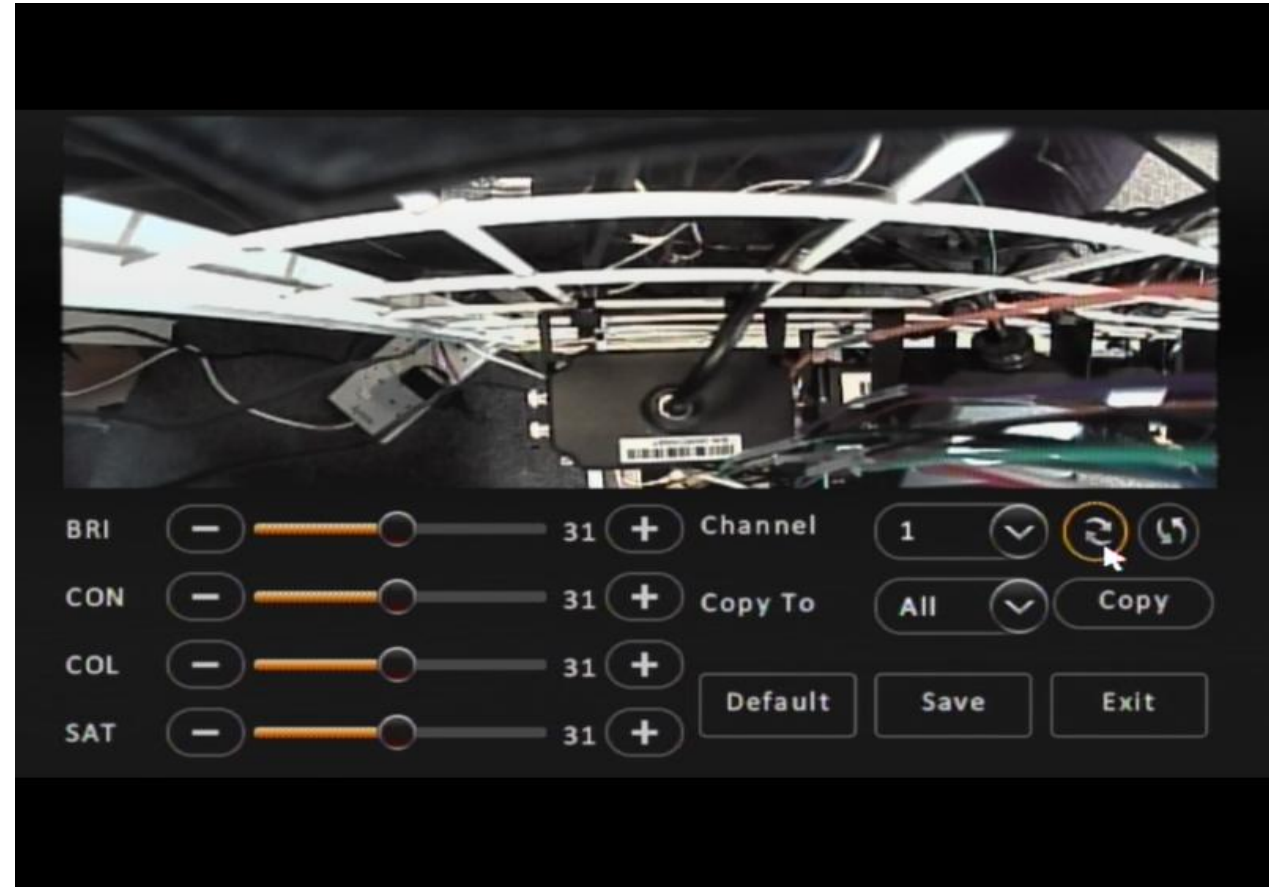


Brigade



How to change normal view to mirror view

- Select the preferred camera channel.
- Click on the arrows  depending if you require upside down or mirror view.
- There is also a feature where you can copy the settings to all camera channels by clicking on copy and selecting copy to All. 
- Make sure you save successfully before exiting the settings.



Saving your new setting

- Once you have made all the necessary adjustment to the setting, click **Save**.



Video demonstration

- This video shows in real time how to change to mirror, upside down view and Save.



Contact Us



Brigade Electronics Group Plc.

Brigade House, The Mills, Station Road

South Darenth, Kent DA4 9BD, United Kingdom

Sales and Customer Services: +44 (0) 1322 420300

Technical Support: +44 (0) 1322 420347

www.brigade-electronics.com