

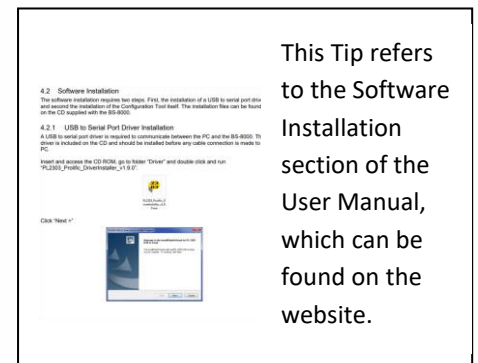
Ref: TT0006  
V1.2

## Radars - Backsense® Software Download

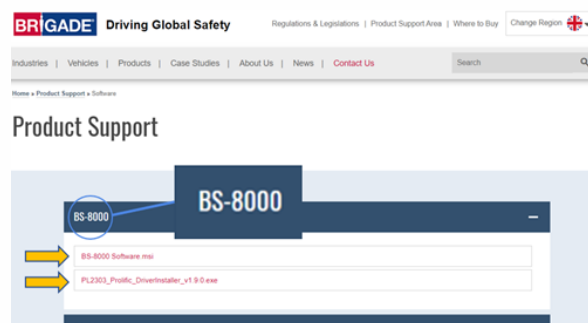
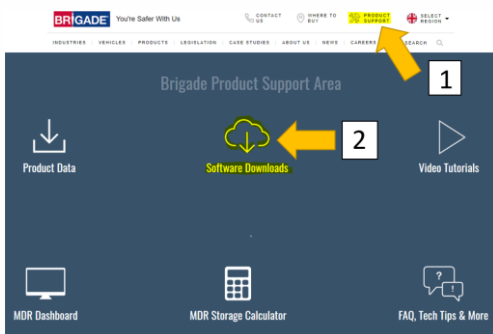
### Related Products - Backsense® BS-8000 & BS-9000-WD

Brigade's Backsense® BS-8000 and BS-9000-WD can both be configured to the users requirements, within the specific product parameters.

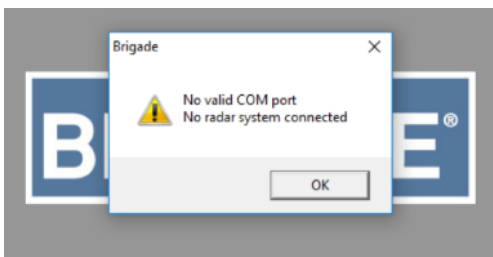
For these products to be configured correctly both the **BS-8000 Configuration Software** and **PL2303 Prolific Driver** need to be installed either from the CD supplied with the BS-8000 or from the Brigade website. [www.brigade-electronics.com](http://www.brigade-electronics.com)



The images below show where to find the software on the Brigade website.



The radar system must be active, (green status LED illuminated) to enable a connection.



When configuring either the BS-8000 or BS-9000-WD if the error message (shown on the left) is displayed it can mean that the Driver software has not been installed correctly. Full instructions on PC and software requirements can be found in the User Manual, Section 4.

For additional fault finding please refer to **Error States** in section 3.8 of the User Manual, which can be found on the website and in the kits.

